



University of  
Chester



# Business Research Institute

AT THE UNIVERSITY OF CHESTER



research for regional business with a global reach

## What is BRI?

The Business Research Institute (BRI) is based at the University of Chester and is focused on research into issues affecting the regional economy.

## Why BRI?

We have established quality contacts and networks with key organisations in the region. Our prime aim is to increase the competitiveness of regional businesses for export orders and inward investment.

## Key research themes

We welcome contributions from the business community, research partners, and academics who are interested in any of the following key research themes:

- ▶ The development and promotion of small and medium sized sustainable businesses;
- ▶ Entrepreneurship, Leadership and Management;
- ▶ The development and promotion of family businesses;
- ▶ The facilitation of companies and organisations to be able to export to and gain investment from China and South East Asia;
- ▶ Development of business in particular industries, for example Chemical Industry, Energy, Food and Financial Services.

## Research for business needs

Research is disseminated through journal articles, publications, industry appropriate conferences, working groups and expert networks.

## Research for delivering impact

We commission research which aims to enhance regional competitiveness for business through addressing key issues impacting on the regional economy. Additionally we respond to requests for strategic research programmes where these can be funded.

## Research for developing future business leaders

We are interested in recruiting quality PhD students who have a commitment to any of our key research themes.

## Competitive thought leadership

The BRI takes an active role in developing business thought leadership in the regional economy by promoting and organising such events as: The Chester Forum and The High Sheriff's Awards for Enterprise.

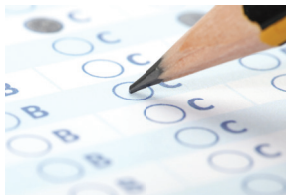
## Meet the Team

- ▶ Professor Phil Harris, Executive Director
- ▶ Henry Sidsaph, PhD Researcher
- ▶ Sally Williamson, Administrator





# University of Chester



The BRI aims to add value to regional businesses by conducting independent and collaborative research projects.



Business Research Institute  
University of Chester, Parkgate Road, Chester, CH1 4BJ, UK  
T: 01244 512888 E: [bri@chester.ac.uk](mailto:bri@chester.ac.uk)

Professor Phil Harris, Executive Director Business Research Institute  
E: [p.harris@chester.ac.uk](mailto:p.harris@chester.ac.uk) T: 01244 511867 M: 078334 36961

[www.chester.ac.uk/bri](http://www.chester.ac.uk/bri)